

**Sustained Rates of C.R. Investigations from 2002 to
2004, by Type of Offense**

2002-2004	Sustained	Total	SU Rate
Brutality	82	5,357	0.0153
Illegal Search	13	3,837	0.0034
Sexual Harassment, Abuse, Rape	22	111	0.1982
Racial Abuse	3	183	0.0164
Planting Evidence, False Arrest	4	661	0.0061
Total	124	10,149	0.0122

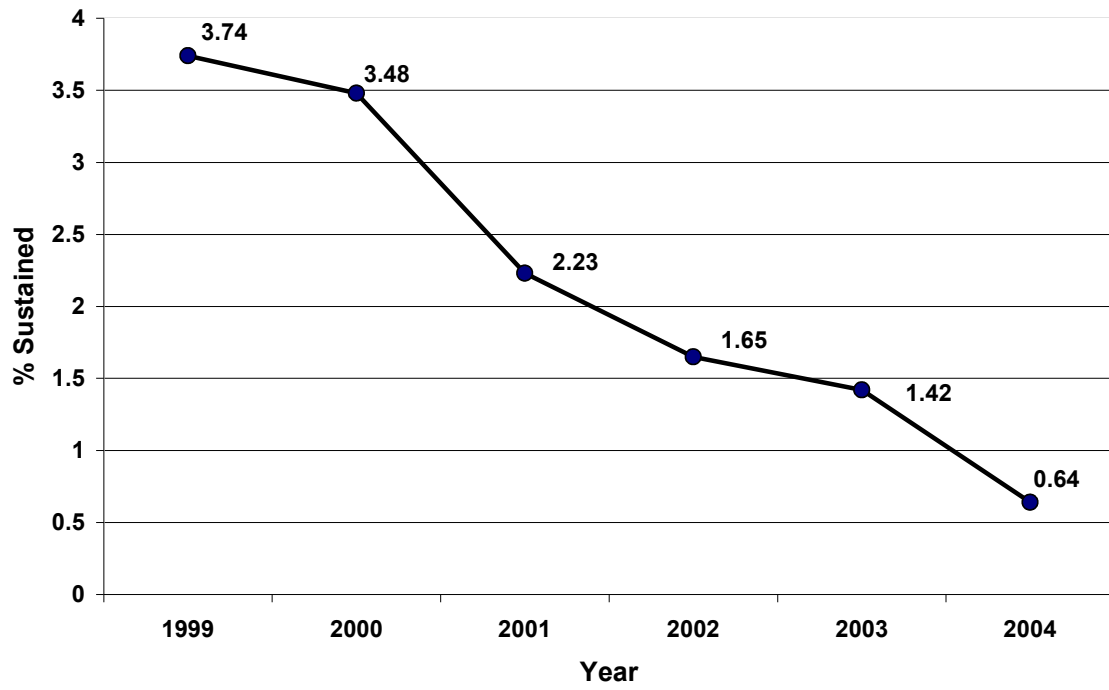
95% confidence interval for Sustained Total Rate (0.0122) = (0.0101, 0.0144)

**Meaningfully Sustained Rates of C.R. Investigations
from 2002 to 2004, by Type of Offense**

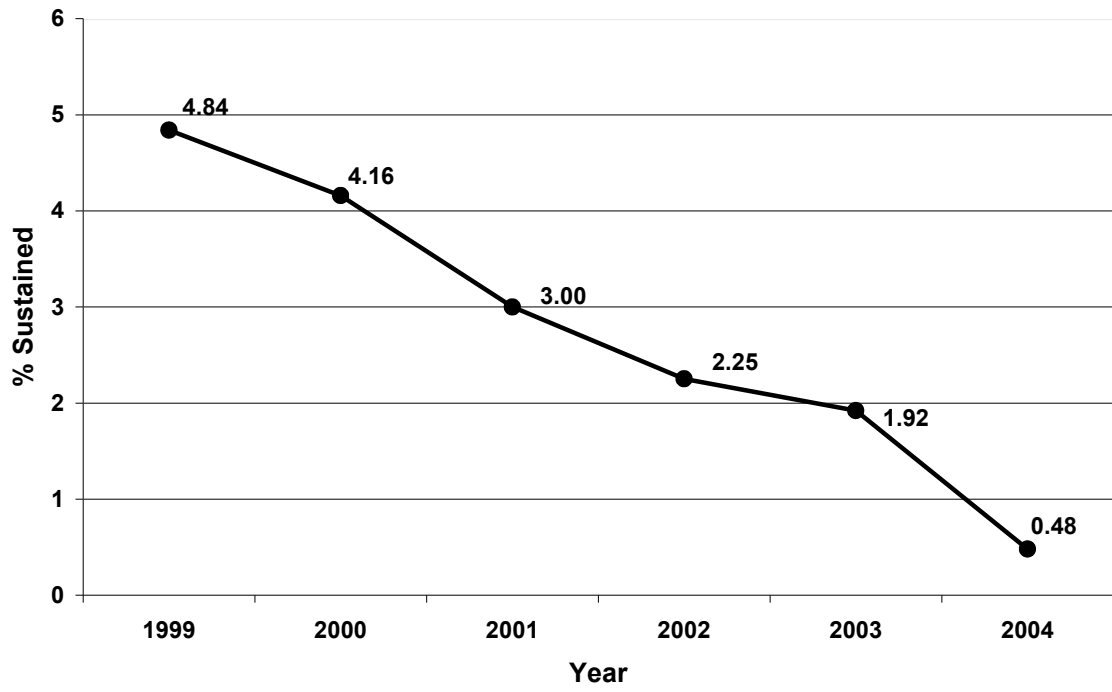
2002-2004	Meaningfully Sustained	Total	MS Rate
Brutality	15	5,357	0.0028
Illegal Search	1	3,837	0.0003
Sexual Harassment, Abuse, Rape	2	111	0.0180
Racial Abuse	1	183	0.0055
Planting Evidence, False Arrest	0	661	0
Total	19	10,149	0.0019

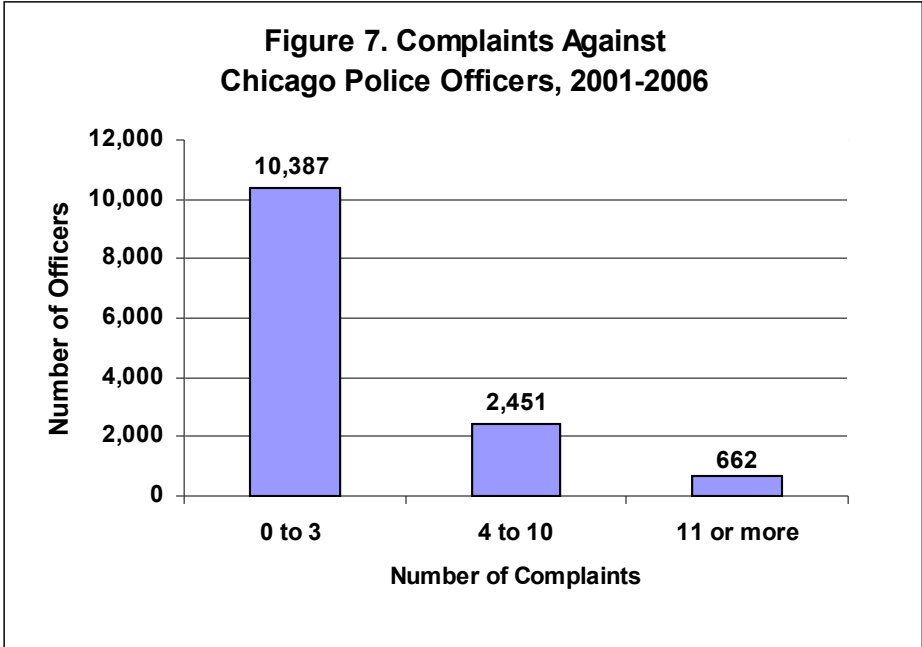
95% confidence interval for Meaningful Sustained Total Rate (0.0019) =
(0.001031, 0.002713)

Percent Sustained Complaints by Year: Total



Percent Sustained Complaints by Year: Brutality





Note: Median is 1.5 complaints per officer